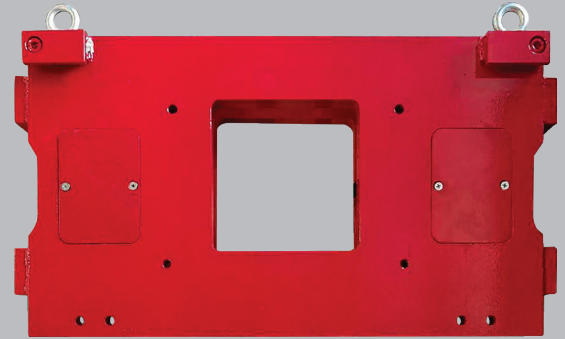
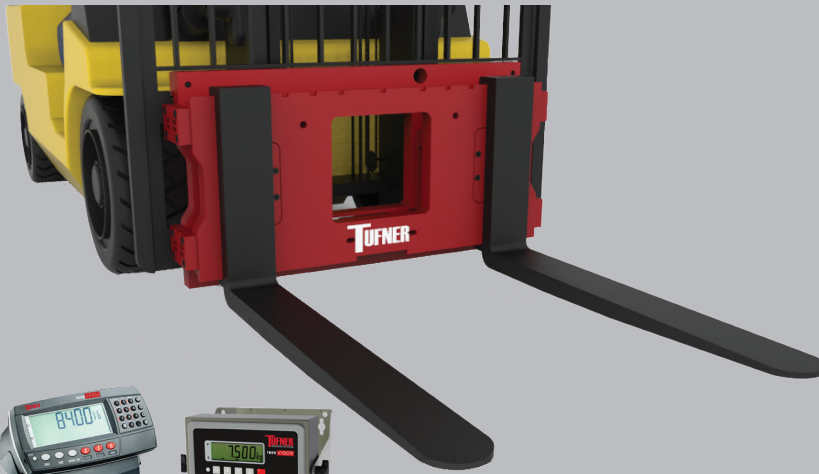


# TUF-LIFT FORKLIFT SCALE



FORKS SLIDE OVER  
 SCALE ATTACHMENT



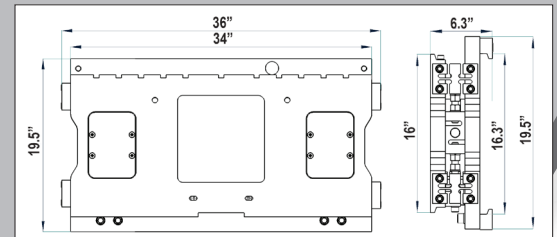
MOUNTED IN  
 FORKLIFT CAB



MOUNTED IN  
 FORKLIFT PANEL



TUFBOOK MINI  
 Wireless tablet collects  
 and saves weight data.



## SPECIFICATIONS

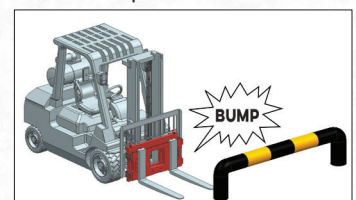
- **CONSTRUCTION:** Structural Carbon Steel
- **CAPACITIES:** 5,000 lbs x 1 lbs
- **TYPE:** Cleat
- **POWER:** Integrated rechargeable battery
- **PROTECTION:** IP65
- **OVERLOAD:** 400% F.S.
- **SIDE LOADING (SINGLE FORK):** 100% F.S.
- **LOAD CELLS:** S-beam 10,000 lb x (2)
- **INSTRUMENT-TO-FORKS INTERFACE:**  
 Optional wireless Bluetooth Communication
- **APPROVAL:** NTEP Pending
- **WARRANTY:** 2 years limited

## TUF-LIFT FEATURES:

- Heavy duty front and back painted steel plates with four flexures
- Compatible with Class II or Class III forklift cleat type carriages
- Two NTEP approved 10,000 lb S-beam load cells
- Optional indicators: basic or full numeric keypad for manual tare entry
- Optional integrated inclinometer (NTEP version)
- Out of level tolerance up to ten degrees pitch and roll, side to side
- Indicator can be wired or wireless to the scale
- Specifically developed for industrial/commercial applications
- Incorporates design features to weigh accuracy under all conditions
- Wireless Bluetooth communication between scale and computer
- Seamless integration of weighing and data management
- NTEP pending at 5,000 divisions



Tilt compensation module



Impact & drop protection

PART NO.	CAPACITY	FORKLIFT COMPATIBILITY	WEIGHT
TLFS-5K	5,000 lb x 1 lb	34 in (W), Class II 16 in (H)	418 lbs

OTHER SIZES AVAILABLE