



AGRICULTURAL SCALES & WEIGHING SOLUTIONS

PORTABLE GROUP LIVESTOCK SCALE



FEATURES

- This scale holds multiple large or small livestock at once
- Ideal for weighing cattle, sheep, goats, hogs or horses
- Twin module steel deck with livestock pen and gates
- Durable heavy duty side rails contain livestock
- Latched swing gates on each end for loading in and out
- Steel diamond tread deck construction for grip
- Low 6" profile makes it easy to step on or off
- Bottom gap for cleaning manure with water pump
- Can be used as a weatherproof holding pen
- Stainless steel NTEP load cells and stainless steel junction box
- Heavy duty waterproof cable with protective shroud from rodents
- Durable powder coated finish
- Set up allows for easy relocation
- Platform, indicator, cables, pen and gates all included
- Optional Rubber cow mat for hoof comfort and grip is 3/4" thick; mat can be easily cleaned with scrapers and the soft rubber will not curl
- Optional extension posts add height for taller animals like horses
- **NTEP** Approved Class III, 5000 CC#: 17-034A1

SPECIFICATIONS

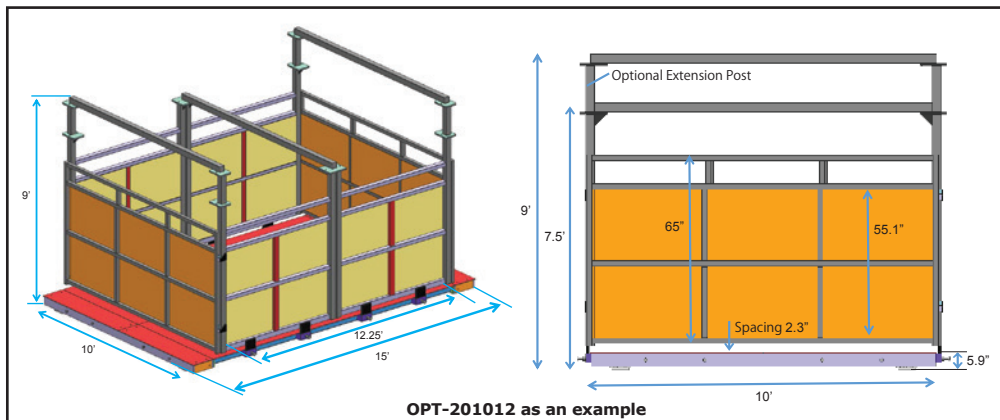
- **MATERIAL:** Heavy Duty Steel
- **OVERLOAD PROTECTION:** 200%
- **INDICATOR:** Waterproof housing with Battery
- **POWER:** AC/DC, built-in rechargeable battery
- **CAPACITY:** Up to 40,000 lbs
- **RAIL HEIGHT:** 65 in
- **CABLE LENGTH:** 45 ft

OPTIONS/ACCESSORIES

- Cow mat
- Extension posts for horses
- Ramps
- Software
- Label/Table printer
- Indicator stand
- Indicator enclosure
- Scoreboard

| MODEL | CAPACITY | INSIDE DIMENSIONS | OVERALL DIMENSIONS | RAIL HEIGHT |
|------------|------------------|-------------------|-------------------------------|-------------|
| OPT-201012 | 20,000 lb x 5 lb | 10' (W) x 12' (L) | 10' (W) x 15' (L) x 7.75' (H) | 65" |
| OPT-201021 | 20,000 lb x 5 lb | 10' (W) x 21' (L) | 10' (W) x 24' (L) x 7.75' (H) | 65" |
| OPT-301026 | 30,000 lb x 5 lb | 10' (W) x 26' (L) | 10' (W) x 29' (L) x 7.75' (H) | 65" |

*OTHER SIZES AVAILABLE

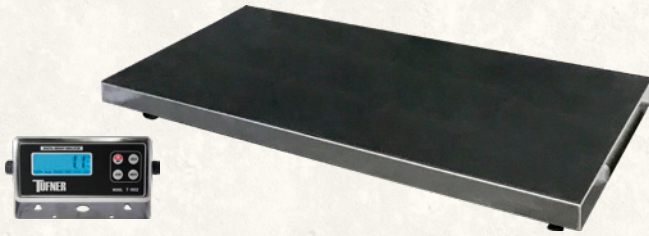


OPTIONAL
8000 REPEL IP69K INDICATOR



LOAD CELL WITH
RODENT PROOF SHROUDED CABLE

STAINLESS STEEL VET SCALE



Model: T922

This medium sized durable stainless steel scale has a low 2" profile and comes with a black anti-skid rubber mat topper to prevent animals from slipping.

Capacity: 1,000 lb x 0.2 lb **Size:** 43"(L) x 20"(W) x 2"(H)

PORTABLE LIVESTOCK SCALE



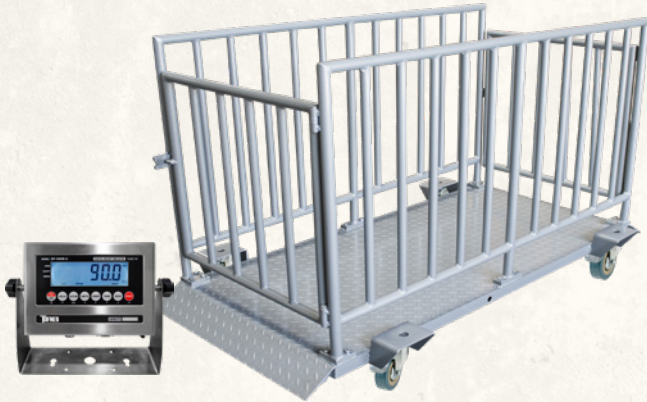
Model: T920

This scale is portable and has carry handles and wheels with a tread plate surface and built in ramps.

Capacity: 2,000 lb x 0.5 lb; 1,000 lb x 0.2 lb

Size: 50"(L) x 20"(W) x 2.5"(H)

CALF SCALE



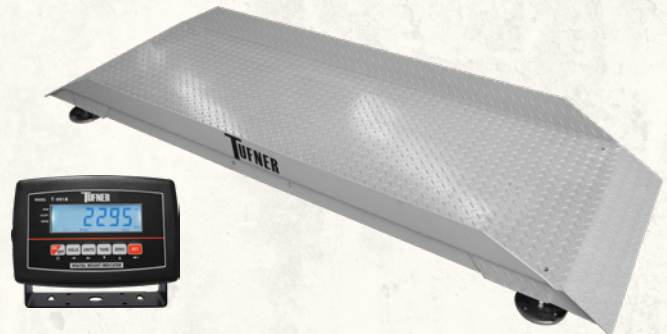
Model: T930

This caged scale is great for weighing hogs, sheep, small cattle or ponies. It comes with removable swivel casters with brakes for easy moving.

Capacity: 2,000 lbs. x 0.5 lb

Size: 60"(L) x 30"(W) x 37"(H)

ALLEYWAY SINGLE LIVESTOCK SCALE



Model: T929

Large platform heavy duty livestock scale accommodates most animals and has a tread plate surface for added grip. The ends have 4" built in ramps and 4" high side rails.

Capacity: 5,000 lbs. x 1 lb.

Size: 83"(L) w/o ramps x 26"(W) x 4"(H)

PALLET JACK SCALE



Model: T918

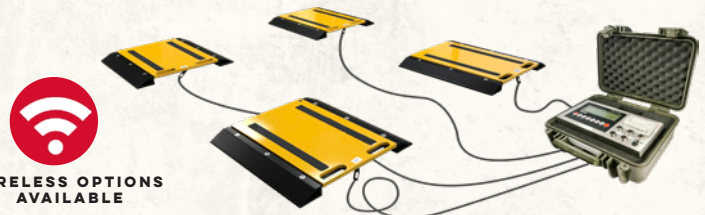
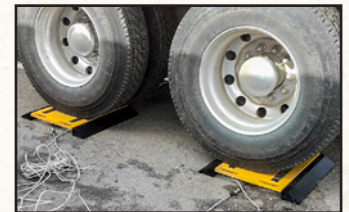
Our pallet jacks come in painted carbon steel or washdown stainless steel. Both have reinforced construction for heavy and long use. Low profile design with tapered forks for easy entry into pallets. Their ergonomic full function handle allows for easy lifting, moving and weighing and the steering is effortless on flat or uneven surfaces. Includes a built in LCD display with optional printer.

NTEP Approved 3,000 x 1 lb and 5,000 x 2 lbs CC 18-074.

Capacity: 5,000 x 1 lbs, 3,300 x 1 lb

Fork Size: 46"(L) x 21"(W) x 2.9"(H) or 48"(L) x 27"(W) x 2.9"(H)

AXLE PADS



WIRELESS OPTIONS AVAILABLE

Model: Tuf-Pads

Our portable, low profile weighing pads easily weigh large vehicles and multi axle trucks. They come with handles and wheels for easy carrying. This scale is easy to use and can be driver operated. The scale comes with an 33' shielded metal cable to attach to our T903 stainless steel indicator that comes with a built in printer and has a convenient carrying case. 2, 4, 6, 8+ pad systems available.

Capacity: 20,000 lb x 5 lb – 100,000 lb x 10 lbs

Size: 14"(L) x 16"(W) x 1.75"(H) – 36"(L) x 30"(W) x 2"(H)

FLOOR SCALE



Model: TUF-MADE

Our heavy duty pallet scale is built for longevity and accuracy in industrial use. The deck is 1/4" thick and has anti-corrosion baked on powder paint. The scale includes ball cup leveling feet, and a 20' heavy duty metal shielded cable. Installation is quick and easy. Our load cells come with 200% overload protection.

NTEP approved for 5,000 and 10,000 lbs CC: 10-081A2.

Capacity: 5,000 lb x 1 lb – 10,000 lb x 2 lb

Size: 2'(L) x 2'(W) x 4"(H) – 5'(L) x 7'(W) x 4"(H)

BENCH SCALES



Model: Splash, Take-Away and Sterling

Our bench scales come in standard carbon steel or washdown ready stainless steel. They are ideal for markets, shipping, and food processing. Measures in lb, kg, g, oz, lb:oz, has an upper/lower limit alarms, and has counting and accumulation features.

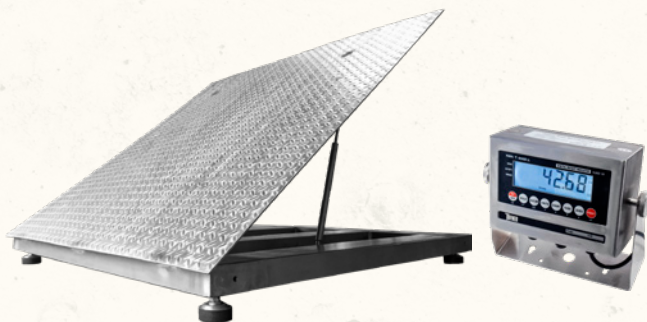
NTEP Approved Class III, 5000 Divisions CC#: 11-016.

Canada Legal For Trade CC#: AM-5817.

Capacity: 6 lb x 0.0002 lb – 1,000 lb x 0.2 lb

Size: 12"(L) x 12"(W) x 5"(H) – 24"(L) x 32"(W) x 5"(H)

LIFT UP FLOOR SCALE



Model: TUF-MADE Lift Top

This version of our Tuf-Made scale, is made with a stainless steel platform, base, load cells, feet, junction box and indicator. The top platform lifts up for high pressure washdowns. Ideal for the food and chemical industry. **NTEP** Approved CC: 10-081A2.

Capacity: 5,000 lb x 1 lb – 10,000 lb x 2 lb

Size: 3'(L) x 3'(W) x 4"(H) – 5'(L) x 4'(W) x 4"(H)

PORTABLE WEIGH BEAMS



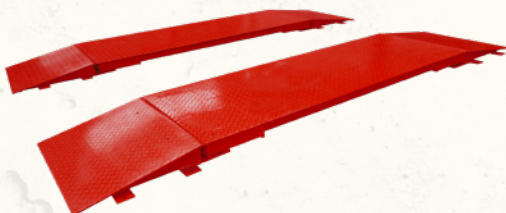
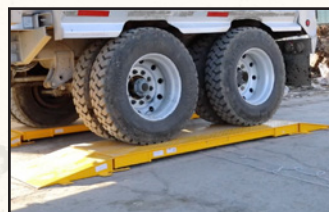
Model: TWB

This portable yet heavy duty system is ideal for tight spaces and can be stored easily. They come integrated with wheels and carry handles for easy transporting and can be used to weigh cages, silos, milk tanks, small platforms or storage containers.

Capacity: 5,000 lb x 1 lb – 20,000 lb x 2 lb

Size: 24"(L) x 4"(W) x 3.2"(H) – 60"(L) x 5.5"(W) x 3.2"(H)

AXLE SCALE



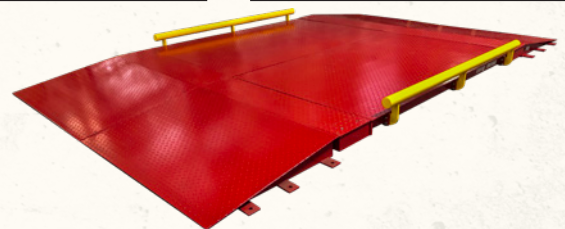
Model: Tuf-Ax

This vehicle scale has a large weighing surface, a low profile and is easily portable with a forklift. Its heavy duty steel U-Beam construction and threaded top plate are great for above ground or pit installations. It comes with four premium watertight alloy steel load cells that have a 2.2X overload protection. The scale comes with an 25' shielded metal cable to attach to our T900 stainless steel indicator.

Capacity: 60,000 lb x 10 lb – 80,000 lb x 10 lb

Size: 84"(L) x 32"(W) x 5.75"(H) – 144"(L) x 32"(W) x 5.75"(H)

CARGO SCALE



Model: Tuf-Loader

This vehicle scale has an extra large weighing surface and a low profile, its modular design can allow for multiple lengths. Great for above ground or pit installations. It comes with four premium watertight alloy steel load cells that have a 2.2X overload protection. The scale comes with an 25' shielded metal cable to attach to our T900 stainless steel indicator.

NTEP Approved Class III, 5000 CC#: 17-034A1.

Capacity: 60,000 lb x 10 lb – 150,000 lb x 10 lb

Size: 16'(L) x 9.8'(W) x 5.75"(H) – 36'(L) x 9.8'(W) x 5.75"(H)



Permanent Everlast installation.



Our portable truck scale doesn't need a concrete base and can be easily relocated.

TRUCK SCALE

Model: Tuf-Bridge, Everlast

Tufner's truck scale is tough and dependable, built with up to 9/16" tread plate decking, orthotropic ribs and completely sealed continuous welds for rust protection. Our interchangeable modular design allows for easy set up and multiple length options. Its baked on powder coat finish is proven to be as much as 10X more effective in resisting wear and corrosion in the roughest environments.

NTEP Approved Class III, 5000 CC#: 17-034A1

Capacity: 80,000 lbs – 300,000 lbs

Size: L: 10'-140' W: 10'-14' H: 6-16.5"



Hot dipped galvanized option provides the ultimate corrosion protection.

ONBOARD APPLICATIONS



FEEDER MIXERS



MILK REFRIGERATORS

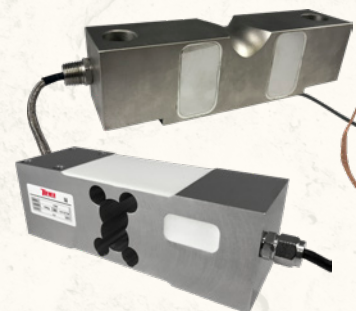


SILOS



GRAIN CARTS

LOAD CELL INTEGRATION



TUFNER
WEIGHING SYSTEMS

TUFNER WEIGHING SYSTEMS

Headquarters: 9030 Bridgeport Pl. Rancho Cucamonga, CA 91730

Manufacturing Facility: 1800 North Collins Fwy. Howe, TX 75459

Ph: 800.810.2965 | Fax: 888.502.8997

SALES@TUFNER.COM | WWW.TUFNER.COM