

STEEL-DECK TRUCK SCALE

TUFNER

WEIGHING SYSTEMS

TUFNER TRUCK SCALES

- LEGENDARY RELIABILITY
- EXCEPTIONAL STRENGTH
- REVOLUTIONARY MODULE DESIGN
- MINIMAL BOLT CONNECTION
- POWDER COAT FINISH



CC# 17-034



TUFNER WEIGHING SYSTEMS

Rancho Cucamonga, CA | Rogers, MN | Alpharetta, GA

Ph: 800.810.2965 | Fax: 888.502.8997

SALES@TUFNER.COM | WWW.TUFNER.COM



HEAVY-DUTY STEEL DECK TRUCK SCALE

BUILT TO THE HIGHEST STANDARD

Tufner Scales is devoted to offering a complete line of truck scales to meet any application requirement, from a new installation, to a custom size for an existing concrete foundation. TUFNER was developed by utilizing our years of experience where we've always met the highest standard. We have turned it up a notch to create top quality, industrial tough scales. Our Tufner Truck Scale is built tough and is the ideal choice for a wide variety of vehicle weighing applications..

EXCEPTIONAL STRENGTH OUTPERFORMS COMPETITORS' SCALES

TUFNER utilizes up to 7/16" tread plate decking for increased durability and strength, and is supported by orthotropic U-beam steel ribs that are completely sealed by continuous welds. Unlike our competitors' design that uses I-beams and intermittent welds, which allows moisture to penetrate, Tufner truck scales are built with an airtight continuously welded seal that eliminates the potential for rusting from the inside out. The U-beam ribs are shaped to distribute concentrated loads and minimize flexing better than I-beam designs, leading to a longer life for your scale even in the harshest environments.

INTERCHANGEABLE MODULAR DESIGN REVOLUTIONIZES THE INDUSTRY

TUFNER truck scales are the only scale of its kind available, thanks to our patented modular design. Our distributors have the ability of stocking individual modules. This allows them to build scales of any size per customers' requirements, or to expand the length of the scale for future growth. Our Tufner Truck Scale is designed for easy access, which allows maintenance to be more efficient and cost-effective, versus the commonly seen non-modular or semi-modular designs.

BUILT WITH STATE-OF-THE-ART EQUIPMENT

Each scale is built in a fully rotating fixture ensuring proper fit and finish. Rotation of the scale module during the assembly process guarantees uniform and precise welds. We can mass produce identical platforms greater than 20 ft long through our production lines.

EASE OF INSTALLATION, LOADING AND UNLOADING

Each module has as few as 6 bolts compared to 40 on all other modular designed scales. Having less bolts minimizes the time of installing a 11'x70' scale to only hours instead of days. Our Tufner Scale is shipped on an open side flat rack container, allowing for easy unloading. This has made it possible to unload our modular design panels with an industrial fork lift rather than a crane, saving our customers time and money.

POWDER COAT FINISH

Tufner Weighing Systems utilizes a powder coat finish on all of our scale systems. Compared to conventional painting methods, our technique has proven to be as much as 10 times more effective in resisting wear and corrosion in even the toughest of environments. Powder coat surfaces are more resistant to chipping, corrosion, scratching, fading, and wearing, than other finishes. More importantly, it contains zero solvents which is safe, and environmental friendly.

HOT DIPPED GALVANIZED

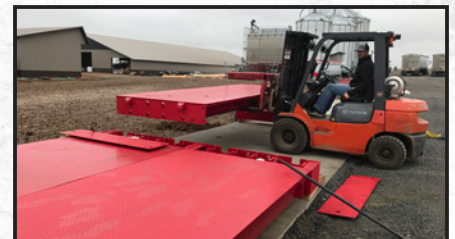
Tufner also offers hot dipped galvanization, the process of coating iron and steel with zinc, which strengthens the steel and builds its corrosion resistance. It's non-corrosive properties are ideal for use in chemical industries and harsh areas.



CONTINUOUS WELDS



MODULAR DESIGN



EASY TO INSTALL

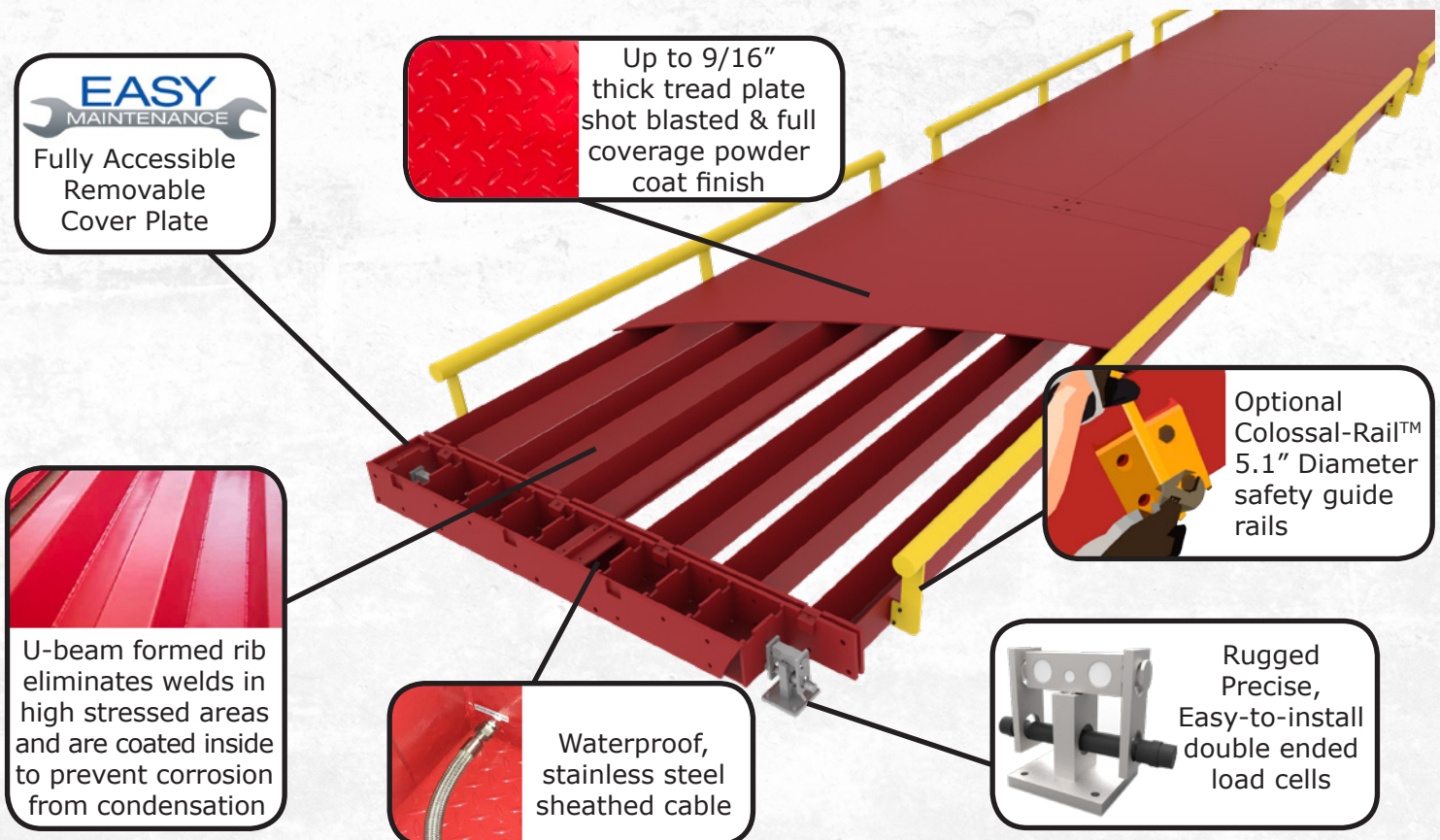


POWDER COAT FINISH



HOT DIPPED GALVANIZED

PART#	TUF-BRIDGE FOR HD INDUSTRIAL APPLICATIONS	EVERLAST FOR LIGHT TO MEDIUM APPLICATIONS
Gross Capacity	270,000 lbs (135 tons)	160,000 lbs (80 tons)
CLC (concentrated load capacity)	120,000 lbs (60 tons)	80,000 lbs (40 tons)
Width	10' to 14'	
Length	Module Length: 10' to 20' Total Length: 20' to 120'	
Scale Profile	16.5"	14.5"
Scale Clearance	5.5"	4.5"
Deck Plate Thickness	up to 9/16"	5/16"
Weigh-bridge End Plates	3/4" x 11" plate	1/2" x 11" plate
Inner Supports	1" thick slab plates (6 per module)	3/4" thick slab plates (6 per module)
Finish	Baked Primer & Baked Full Coverage Powder Coating or Hot Dipped Galvanized	
Load Cell Type	Double ended, Analog, NTEP Alloy Steel	
Load Cell Numbers	10 pcs (reference for 70ft and 80ft only)	
Load Cell Capacity	75,000 lbs, LE (Large Envelope)	75,000 lbs, SE (Small Envelope)
Load Cell Cable	Stainless Steel Sheathed Cable for waterproofing plus extra shroud for rodent protection	
Junction Box	NEMA 4X Stainless Steel, Cable strain reliefs	
Summing Card	10 cell boards with surge protection & sectional adjustment (reference for 70ft and 80ft only)	
Surge Protection	Lightening/Surge Protection	
Installation Type	Above or In-ground	
Est. Shipping Weight	33,400 lbs (70ft x 11.2ft reference only)	24,500 lbs (70ft x 11.2ft reference only)
Warranty	5 Years covering weighbridge 2 years covering junction box and load-cells	5 Years covering weighbridge 2 years covering junction box and load-cells
Certification	NTEP, Class III L, CC# 17-034	

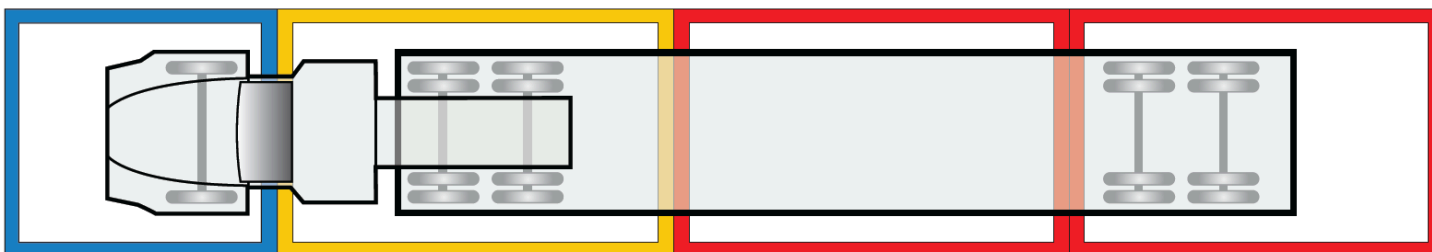


ACCESSORIES

- INDICATOR OR INDICATOR KIOSK
- INDICATOR STAND
- REMOTE DISPLAY
- SCOREBOARD WITH TRAFFIC LIGHTS
- STOPLIGHT
- SOFTWARE
- PRINTER
- STEEL RAMP
- GUIDE RAILS (FOR ABOVE GROUND)
- FRAME (FOR PORTABLE TRUCK SCALE)



MULTI-AXLE TRUCK SCALES - FAST AXLE WEIGHING



Front Axle Scale

Drive Axle Scale

Rear Axle Scale

TUFNER
WEIGHING SYSTEMS

TUFNER WEIGHING SYSTEMS
9030 Bridgeport Pl. Rancho Cucamonga, CA 91730, USA
Bakersfield, CA • Rogers, MN • Alpharetta, GA
Ph: 800.810.2965 | Fax: 888.502.8997
SALES@TUFNER.COM | WWW.TUFNER.COM